



J2ME Mobile Software Development

Rapidsoft Systems believes that high performing technical players are always surging ahead of the competition by doing one thing right – using information technology to build competitive advantage and market share. We use top rung technology and systems integration to provide technology R&D, IT diagnostics, systems integration, technical architectures, business intelligence and infrastructure consulting among others.

We work with more than 2500+ handsets and work with all major US, Canadian, European and Asian carriers. Among the applications that we have developed/ported are some very popular games, mapping applications, city guides, puzzle games, and corporate mobile applications. All these applications are widely distributed by Major US carriers (ATT, T-Mobile, Verizon, Sprint, US Cellular, Alltel etc.). We also work with major European carriers such as Vodafone, Orange, T-Mobile etc. We have over 20 years of experience in mobile technologies in designing mobile applications, mobile phones programming - some of us at Rapidsoft Systems even designed cellular phones, pagers, GSM/ CDMA base stations and cellular switching equipments themselves for companies like Motorola, Nokia and Panasonic.

JAVA

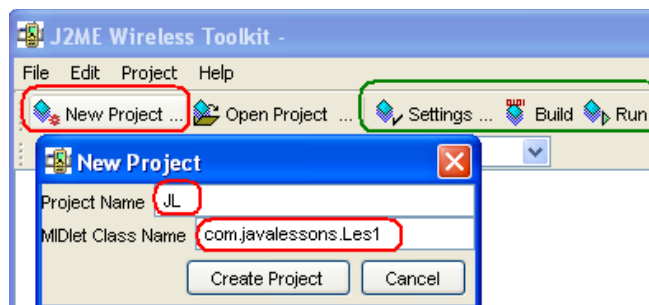
Rapidsoft Systems provides professional Java programming and custom development which includes J2SE, J2EE and J2ME platforms. **With nearly 20 years expertise in Java technologies, there is no project that we cannot handle. We recently implemented a major server with over 300,000 threads and 2 million lines of code.**

We believe in, and offer extensive custom development experience – when you partner with us, you get a combination of strong technical background and knowledge of business domains. The J2EE and Java skill sets of our programmers include an extensive list of products and technologies. Our consultants and programmers use their analytical talents to address the most complex programming tasks.

J2ME - Java 2 Platform, Micro Edition

The Java 2 Platform, Micro Edition (J2ME) provides a robust, flexible environment for software applications running on consumer devices and a broad range of embedded devices. J2ME includes Java virtual machines and a set of standard Java APIs defined through the Java Community Process.

J2ME delivers the power and benefits of Java technology to consumer devices and embedded devices. J2ME includes flexible user interfaces, a robust security model, a broad range of built-in network protocols, and extensive support for networked and offline applications that can be downloaded dynamically. Applications based on J2ME specifications are written once for a wide range of devices, yet exploit each device's native capabilities.



The Architecture, Configurations, Profiles: J2ME

The J2ME architecture comprises of a variety of configurations, profiles, and optional packages that implementers and developers can choose, and combine to construct a complete Java runtime environment that closely fit the requirements of a particular range of devices and a target market. Each combination is optimized for the memory, processing power, and I/O capabilities of a related category of devices. The result is a common Java platform that takes full advantage of each type of device to deliver a rich user experience.

Configurations comprise a virtual machine and a minimal set of class libraries. They provide the base functionality for a particular range of devices that share similar characteristics, such as network connectivity and memory footprint. Currently, there are two J2ME configurations: the Connected Limited Device Configuration (CLDC) and the Connected Device Configuration (CDC).

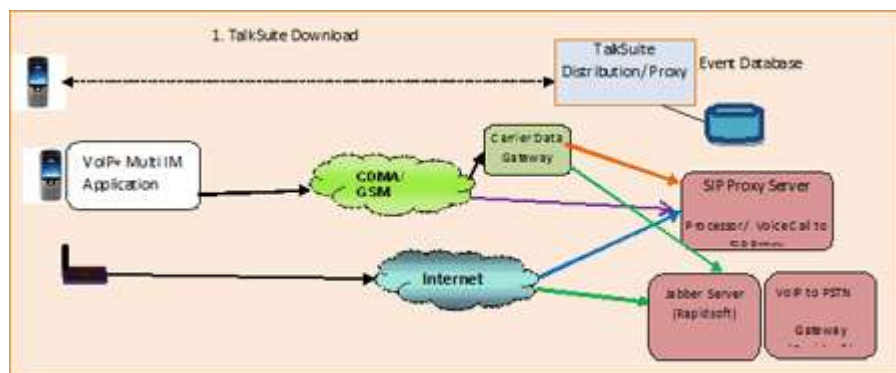
To provide a complete runtime environment for a specific device category a configuration must be combined with a profile, a set of higher-level APIs that further define the application life-cycle model, the user interface, and access to device-specific properties. A profile supports a narrower category of devices within the framework of a chosen configuration. A widely adopted example is to combine CLDC with the Mobile Information Device Profile (MIDP) to provide a complete Java application environment for cell phones and other devices with similar capabilities.

Optional Packages: J2ME

Adding various optional packages to a technology stack that includes either CLDC or CDC and an associated profile can extend the **J2ME platform**. Created to address specific application requirements, optional packages offer standard APIs for using both existing and emerging technologies such as **JSR 169: JDBC for CDC/FP database connectivity**, **JSR 120: Wireless Messaging API**, **JSR 135: Mobile Media API**, **JSR 82: Bluetooth API** and **JSR 172 J2ME Web Services**. Because optional packages are modular, developers can avoid carrying the overhead of unnecessary functionality by including only the packages and applications they actually need.

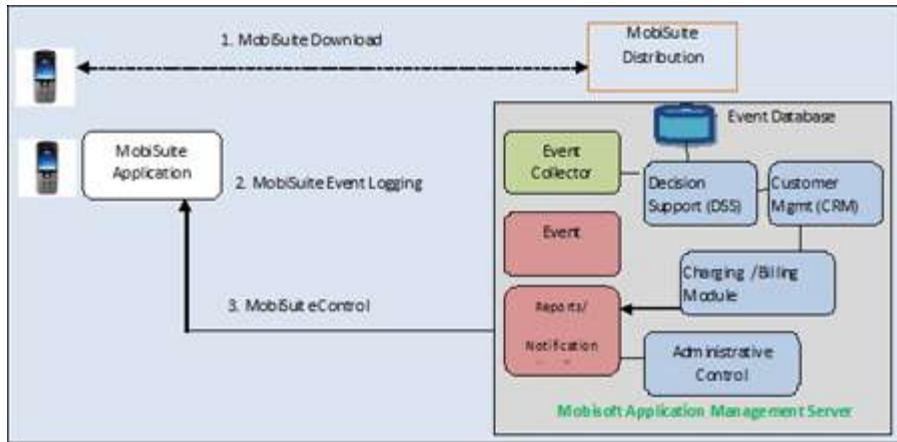
Beyond Basics - Mobile Client - Server Software

Rapidsoft combines its ability to develop complex mobile application with its technology teams in other client server and web architectures divisions, allowing us to leverage our combined technological strength to create virtually any mobile application development system. Case 1 development of a multichat client and SIP shows one such architecture.



Case 1: Mobile Client Server Multichat/ VoIP Client Development Architecture by Rapidsoft Systems

In another development case - the case 2 shows development of a mobile event monitoring system. It is far more complex project with CRM and Database monitoring software all integrated into one. This demonstrates Rapidsoft Systems capabilities to execute the largest and the most complex projects. Be it mobile coupon delivery, commercial or banking applications - we can design, implement and execute a project of any complexity.



Case 2: Mobile Events Monitoring System Designed by Rapidsoft Systems

Long Term Support of Rapidsoft Developed Mobile Applications

Rapidsoft team will be available to provide long term technical support to customer on their Server or web applications. The similar support is available to all customers for their new mobile applications. We can test and certify the phones and will support any issues over the phone from the expert team in India. A support mechanism will be developed with your team.

Here will be key goals:

- Evaluate all new phones as they are announced
- Add them to supported pages if deemed necessary
- Deal with customer issues for any particular phone
- Verify port or functionality as needed
- Add newer functionality to the phone application

Rapidsoft Support For Dealing With US Carrier Certifications, Distribution and Application Deployments

US cellular environment is very different from Europe and Asia. Unlike Asia and Europe, US phones are locked phones and any application distributed must meet carrier guidelines, content policies and securities environments. With our experience of working with major carriers, we can hold your hand through complex maze of network operator policies of each US cellular operator. Our 20+ years of experience in cellular industry differentiates us with the crowd of novice developers and companies.

Rapidsoft can guide you with distributing your applications through various networks. Because of our relationships, we can deal with content guidelines, and security requirements of each carrier, and will guide you to acquire necessary credentials as applicable from various vendors such as Verisign, Thwate etc. as needed depending upon the phone and carrier requirements. Rapidsoft uses its own signed certificates on our phones for testing.

CDMA applications, if applicable, require True Brew Testing (TBT) certification before they can be offered for distribution and installations. Rapidsoft can guide you through complex process of Qualcomm mandated process of TBT certifications through testing laboratories.

Why Rapidsoft Systems:

With over 350+ software projects executed, you can simply count on our expertise, experience in giving you the right solution at absolutely lowest possible cost. If you would like more information, or want us to submit an estimate or a "no-obligation" quote for your project, contact us for more information.

Rapidsoft Systems, Inc,

(<http://www.rapidsoftsystems.com>)

Offices and Project Centers:

New York (USA), San Jose (USA), Singapore, New Delhi (India), Noida (India), Gurgaon, (India), Chennai (India), Mumbai (India)

For General Enquiries: info@rapidsoftsystems.com

Phones: 1-609-439-4775 (Sales Direct), 1-609-439-9060 (US East Coast, NJ Office)
1-408-829-6284 (Sales Direct), 1-408-890-2509 (US West Coast, San Jose Office)

USA Office Central PBX: 1-609-356-5121 (Multiple Lines -Support Sales, Service and Admin)
Fax: 1-831-855-9743